



AN URBAN LIFESTYLE
Close To Your Heart!



Urban Tree

A home for life



URBAN TREE GETS YOUR SPIRITS UP!



Urban Tree is a 120 flat gated community with exceptional standards for vibrant living. Urban Tree is a blend of Luxury & Lavishness with Premium quality construction with complete amenities. It is ultra-modern in its appeal and therefore caters to the refined tastes of the elite. Make it your home and see the difference that enralls you. A one-of-its-kind stylish property, Urban Tree will always keep you in high spirits.

PROJECT HIGHLIGHTS

- HMDA approved 1 Acre 7 Guntas
- Rain Water Harvesting
- Cellar+Ground+5 Floors
- Generator Back-up
- 2 BHK Apartments
- 24 X 7 Security & CCTV Camera Surveillance
- 120 Flats
- Flat Sizes 848 Sft. to 1239 Sft.
- Vaastu Compliant
- 3000 Sft. Club House
- High Speed Elevators



AMENITIES

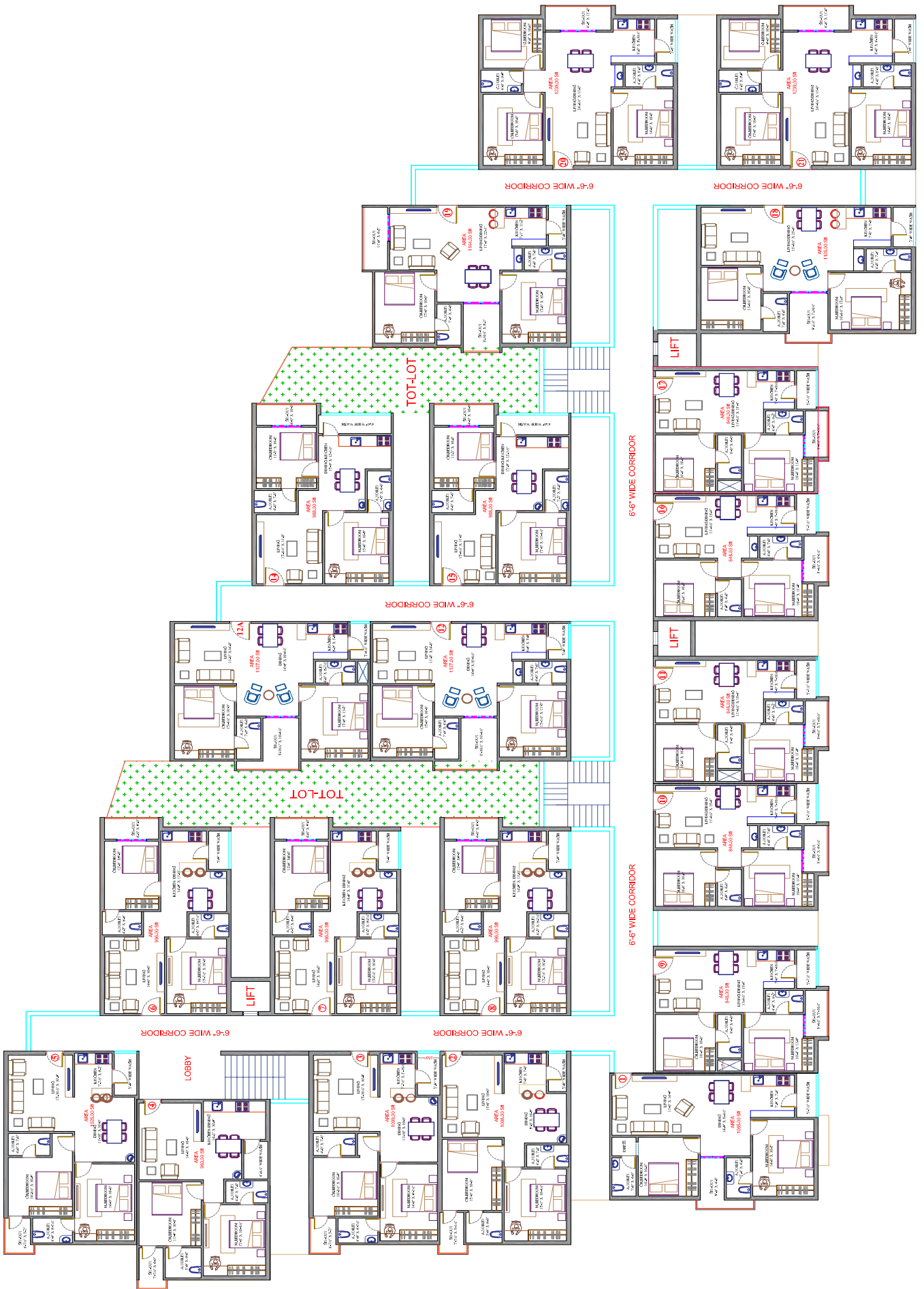
Urban Tree comes loaded with a host of amenities to make life comfortable and happy. For those ideal family moments, Urban Tree unleashes a plethora of memorable moments with the advantage of relaxation and rejuvenation. Even your kids would be happier out here as they have their own play zones.



ON MUMBAI
HIGHWAY
LIFE TAKES
A FRESH
BREATH



Urban Tree Isnapur is a gated community destination for the like minded families who want a premium property close to the city and far away from its hustle and bustle. The project is aimed at giving you luxuries matching a modern lifestyle along with peace that is truly unmatched. The quantum of care taken is simply awesome. In the truest sense of the work, Urban Tree Isnapur is a perfect choice for the urban elite.



TYPICAL FLOOR PLAN

LOCATION

MAP NOT TO SCALE



Scan this QR Code to View the Site Google Coordinates



Scan this QR Code to View the Website



Urban Tree
A home for life

LOCATION HIGHLIGHTS

- 100 Feet road
- 0.5 KM from Mumbai highway
- 2.5 KMS from Exit No.3
- 5 Minutes drive to Maheshwara Medical College
- 10 Minutes drive to GITAM University
- 25 Minutes drive to Financial District
- 10 Minutes drive to Patancheru
- 10 KMS to Lingampally MMTS
- 40 Minutes drive to Airport
- 10 Minutes to IIT, Hyderabad
- 5 Minutes drive to CANDIIDUS International School



Plot No. 164A, 164/B Isnapur to Pashamylaram 100 feet Road, Isnapur, Patancheru Mandal, Sangareddy District, Hyderabad - 502307, Telangana, India. | www.mphdevelopers.com

Contact: +91 9121453074, +91 7036764592

OUR TEAM:

Architects:



Landscape Architects:



Structural Consultants:



This brochure is purely conceptual and is not a legal document. MPH Developers reserve the right to add/modify any terms and conditions, amenities/facilities, specifications and plans mentioned herein.